

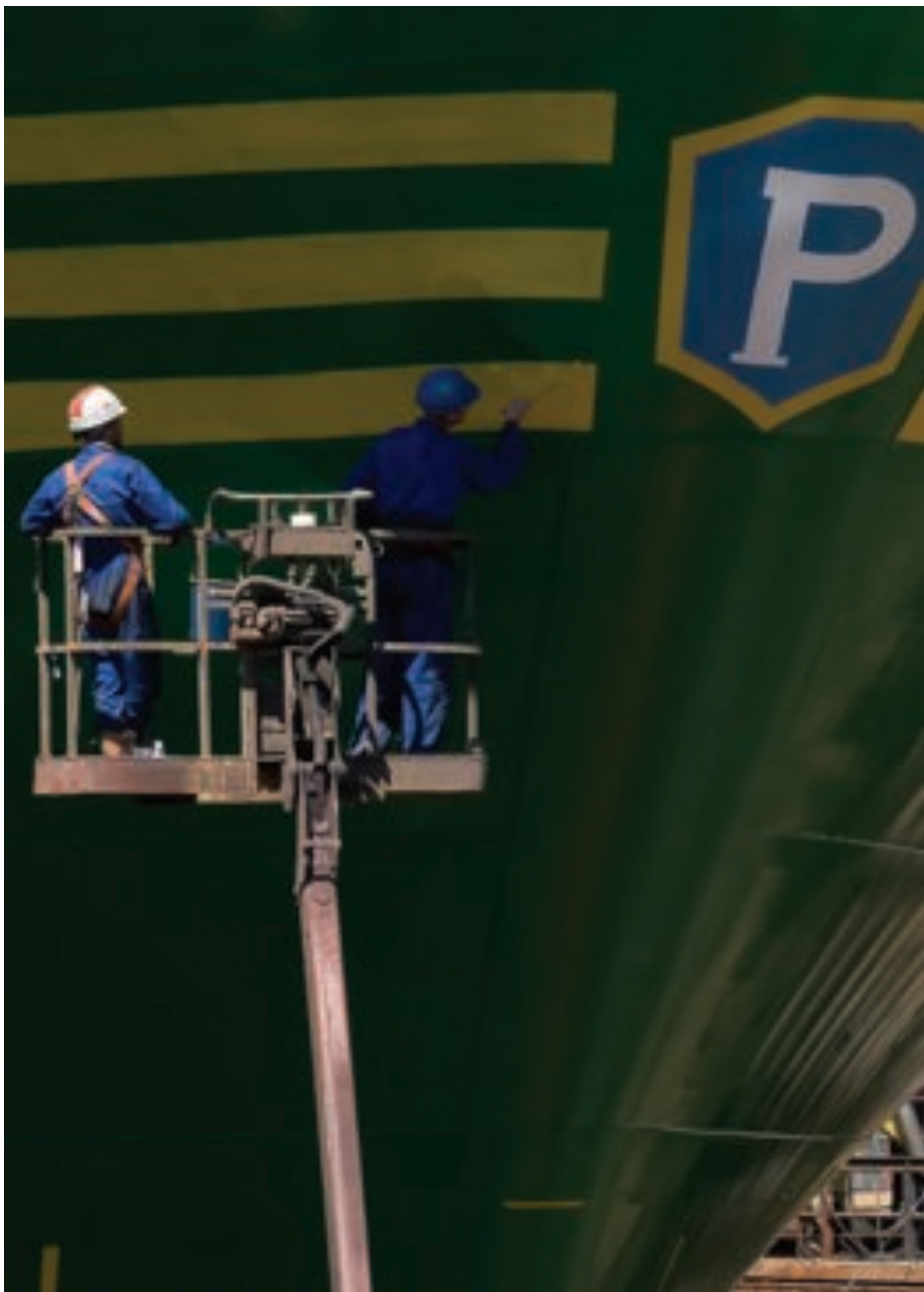


3

+02



**GIBDOCK**



**OUR COMMERCIAL SHIP  
REPAIR AND CONVERSION  
SERVICES INCLUDE**

- STEEL
- PIPE
- PAINTING AND BLASTING
- MECHANICAL AND MAIN ENGINE
- TAIL END
- ELECTRICAL

# PROFESSIONAL SPIRIT

Gibdock has a long-standing reputation for providing the highest standard in shipyard services in one of the most convenient locations in Europe. Situated in the Strait of Gibraltar at the gateway between the Mediterranean and the Atlantic, Gibdock offers comprehensive repair, maintenance and conversion in its three dry docks and protected deepwater port.

With customer service and confidence in mind, the team at Gibdock is united by a shared professional spirit. Every aspect of the shipyard, from training to individual technical skills, quality control and safety is operated to meet the highest international standards including: OHSAS18001:2007, ISO14001:2004 and ISO9001:2008.



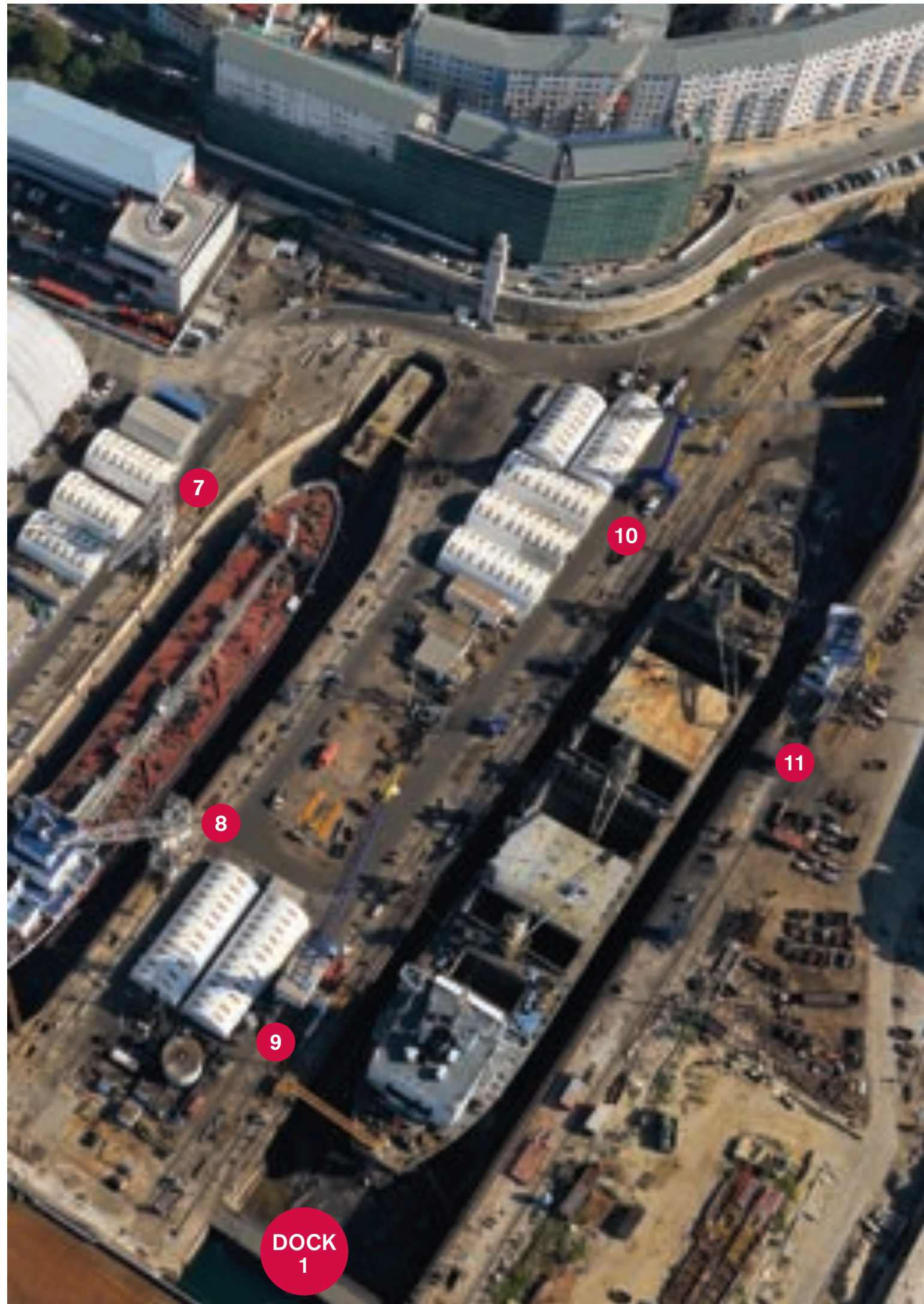
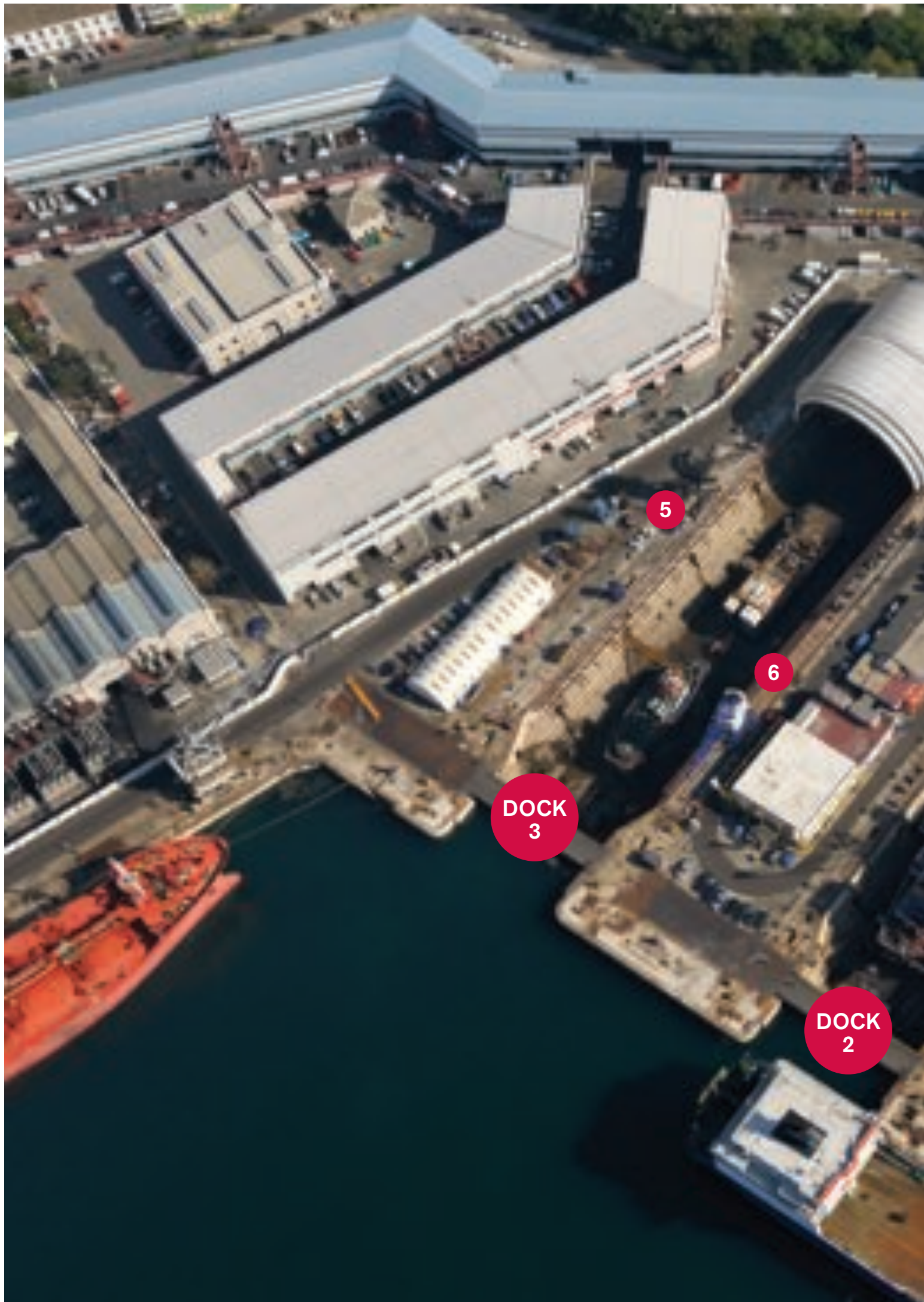
As one of the fabled Pillars of Hercules, Gibraltar guards the entrance to the Mediterranean, making it the perfect location for shipyard services. At the crossroads of Mediterranean and Atlantic shipping lanes Gibdock offers minimal deviation to ships working these waters.

The isthmus of Gibraltar is globally connected. It has its own airport; Jerez, Malaga and Seville are within striking distance; while Madrid is less than an hour away by plane.

Hot summers and mild winters create a year round dry climate that is ideal for outdoor ship-work, especially with today's advanced paint systems.

# THE PILLARS OF HERCULES





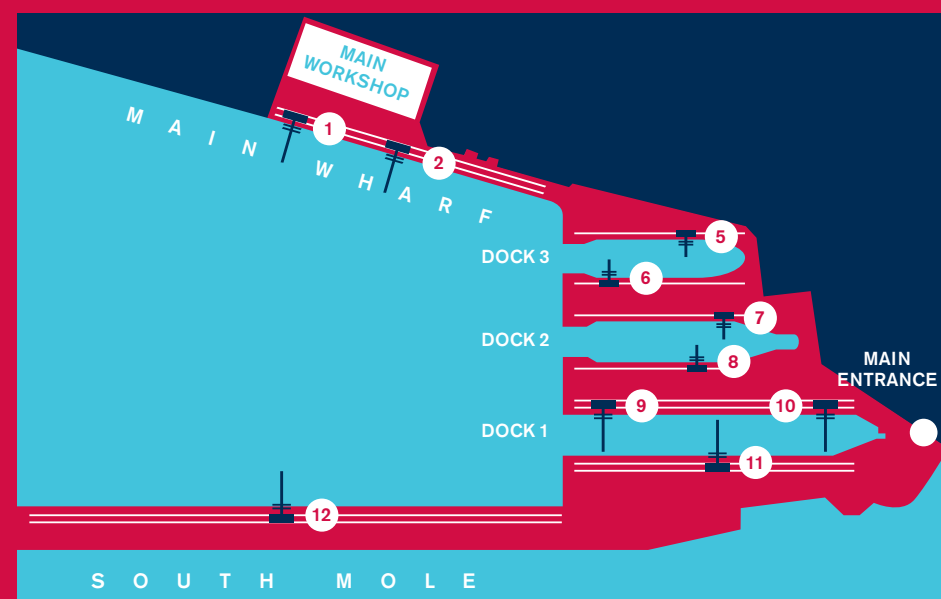
## DOCK DIMENSIONS

DOCK	NO 1	NO 2	NO 3
LENGTH: CAISSON IN INNER STOP	260M	172M	141M
CAISSON IN OUTER STOP	272M	184M	154M
DOCK BREADTH	38M	29M	29M
DRAUGHT OVER BLOCK AT MLWS	10M	11M	11M

## CRANE DETAILS

LOCATION	CRANE NO	CAPACITY (T)	RADIUS (M)	HEIGHT OF LIFT (M)
DOCK 1	9 & 11	10	45 30-10 17-10	30
		25	40	30
		30	35	30
		37	30	30
		45	26	30
	45	14	30	
DOCK 2	10	3	40	30
		4.27	30	30
		8	17.30	30
		8	2.60	30
DOCK 2	7 & 8	7.5 FAST 15 SLOW	ANY RADIUS UP TO 27	25
DOCK 3	5 & 6	10	22	20
		10	9	20
MAIN WHARF	1 & 2	3	40	40
		4.27	30	40
		8	17.30	40
		8	2.60	40
SOUTH MOLE	12	3	40	40
		4.27	30	40
		8	17.30	40
		8	2.60	40

# YARD FACTS



**DRYDOCK 1**  
272m x 38m x 10m  
SERVED BY TWO 45  
AND ONE 8 TONNE CRANE

**DRYDOCK 2**  
184m x 29m x 11m  
SERVED BY TWO 15 TONNE CRANES

**DRYDOCK 3**  
154m x 29m x 11m  
RETRACTABLE COVER WITH 29.5m  
CLEARANCE. SERVED BY TWO  
10 TONNE CRANES

**MAIN WHARF**  
300m x 9.5m

**SOUTH MOLE**  
435m x 11m





To handle a diverse range of projects professionally you need the right people and the right team. From project managers to craftsmen, our experienced specialists at Gibdock bring all the necessary skills to the yard while being bonded by a common goal – performance, efficiency and client confidence.

In the knowledge that our strength rests in our people we run an internal skills training programme that ensures the team is able to deliver to the highest standards while giving individuals the chance for advancement within the organisation.

From initial project planning through to its execution and on-time completion our aim at Gibdock is to deliver a thoroughly professional and friendly experience.

# THE RIGHT PEOPLE THE RIGHT TEAM

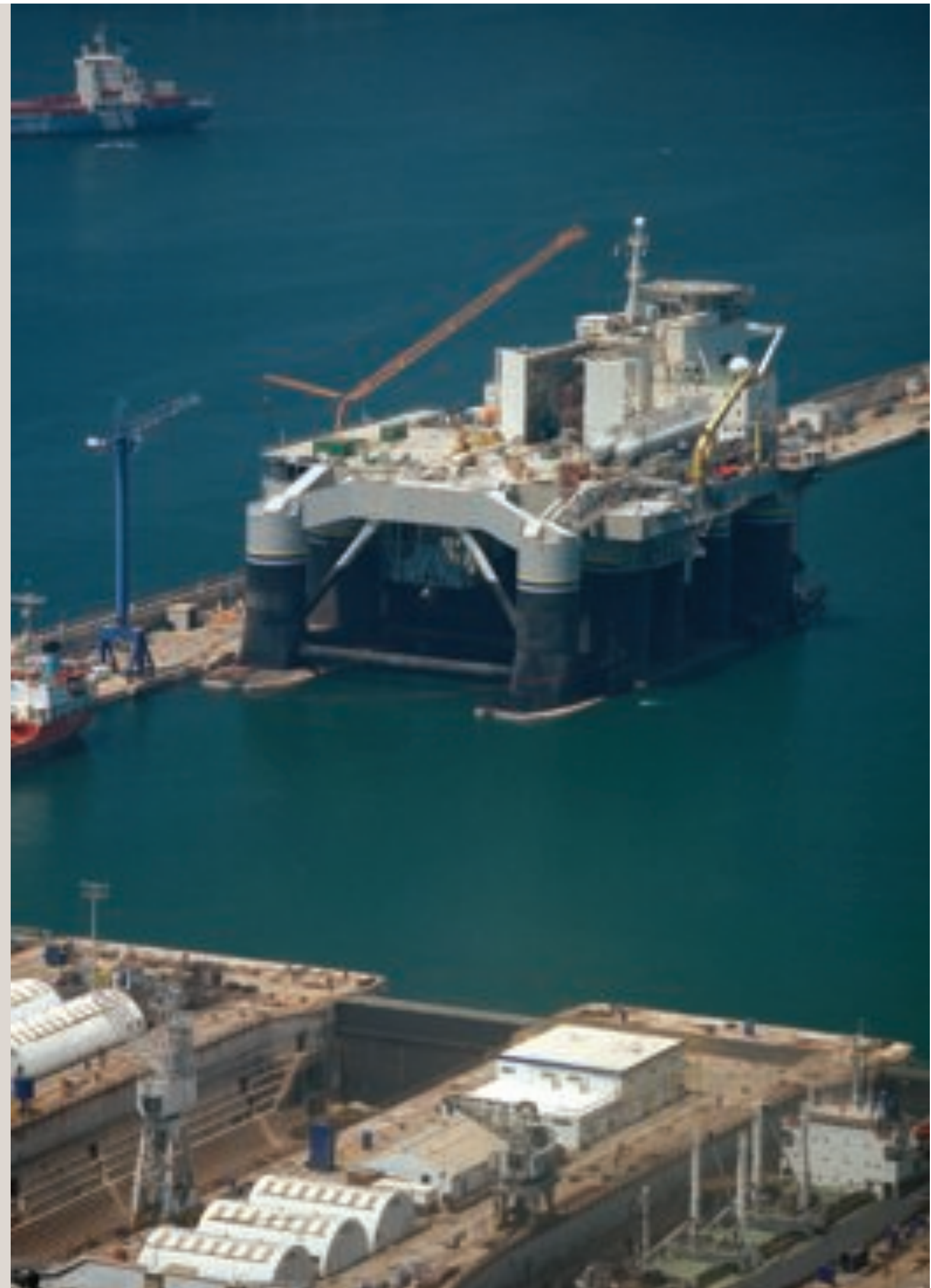


ISPS  
CODE  
PORT  
ID NO.  
21752

# MARKS OF APPROVAL

Gibdock's commitment to professionalism and safety is certified by the standards we maintain in every area of the yard. Our independently audited and approved management system sets out a strict code of quality for personnel and processes. At the same time we are proud of our accreditations from Lloyds Register:

**OHSAS18001:2007** which certifies the proficiency of our Occupational Health and Safety Management Systems.  
**ISO14001:2004** which certifies our Environmental Management System and confirms our commitment to safeguarding our environment.  
**ISO9001:2008** which certifies our Quality Management System to the highest standards for the repair of ships and offshore vessels.  
**ISPS** which certifies our commitment to enhancing dockyard and ship security in accordance with the International Ship and Port Facility Security Code.





**GIBDOCK**

**GIBDOCK**  
MAIN WHARF ROAD  
THE DOCKYARD  
GIBRALTAR

**TELEPHONE**  
+350 200 59400  
**FAX**  
+350 200 44404  
**EMAIL**  
MAIL@GIBDOCK.COM  
**WEB**  
WWW.GIBDOCK.COM



**GIBDOCK**

